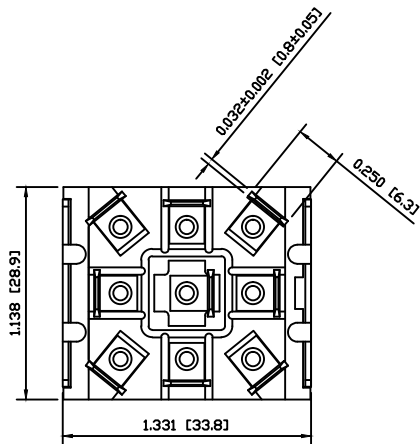


MATERIALS

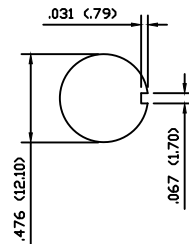
- BODY: Phenolic, UL94 V-0
- ACTUATOR: Nickel Plated Brass
- BUSHING: Nickel Plated Brass
- HOUSING: Stainless Steel
- HARDWARE: Nickel Plated Steel
- FUNCTION PLATE: Stainless Steel
- SPACER PLATE: Laminate Board
- SPRING: Steel
- PLUNGER: Nylon
- MOBILE CONTACT: Silver Plated Copper
- MOBILE CONTACT PIVOT: Silver Plated Copper
- CONTACTS: Silver Alloy Clad Copper
- TERMINALS: Brass

SPECIFICATIONS

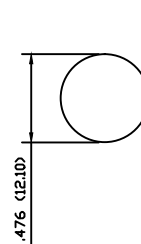
- FUNCTION: 3P2T ON-OFF-ON
- RATINGS: ANSI/UL1054 and CAN/CSA C22.2 No.55 (E194579):
24A 125VAC [cURus]
15A 277VAC [cURus]
2HP 125/277VAC [cURus]
- CONTACT RESISTANCE: Initial: 50mΩ Max. at 50VAC
- INSULATION RESISTANCE: 800MΩ Min. at 500VDC
- DIELECTRIC STRENGTH: 1,500VAC for 1 Minute
- OPERATING LIFE: 6,000 Cycles [cURus]
- TEMPERATURE: Operating: -20°C to 85°C [cURus]
- APPROVALS: RoHS COMPLIANT



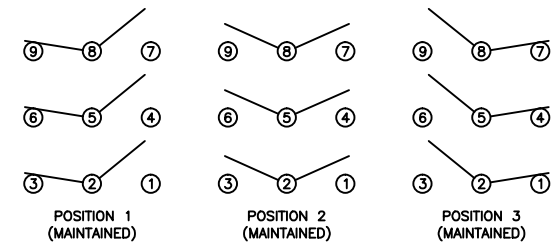
SUGGESTED PANEL CUTOUT



ALTERNATE PANEL CUTOUT



SCHEMATIC



ACTUATOR	A	06/06/06	CAB
BODY		07/14/15	
MATERIALS	A	06/06/06	CAB
SPECIFICATIONS	A	06/06/06	CAB
REFERENCE	REV.	DATE	BY

THE INFORMATION CONTAINED IN THIS DOCUMENT IS PROPRIETARY TO E-SWITCH AND IS NOT TO BE COPIED OR TRANSFERRED

REV.	A	RELEASE FOR PRODUCTION	21012	07/14/15	CAB
		DESCRIPTION	PCR	DATE	DRAWN BY

DIMENSIONS	
INCHES [MILLIMETERS]	
GENERAL TOLERANCES	
±0.020 [±0.5] / ±1"	
SCALE	PROJECTION
DRAWING NOT TO SCALE	

ST34TE02	
DRAWING NUMBER	DATE
34-ST34TE02	07/14/2015
REVISION	A